



MPO TECHNICAL COMMITTEE MEETING

www.laredompo.org

Meeting Date & Time: Tuesday, November 12, 2024 at 2:30 PM

Meeting Location: Transit Center Conference Room - 1301 Farragut St. Laredo, TX 78040

AGENDA:

1. Chairperson to call meeting to order.
2. Presentation and update on the Microtransit Feasibility Study by The Goodman Corporation.
3. Presentation on the FY2026 Unified Transportation Program (UTP) process and timeline.
4. Discussion and recommendation to initiate a (20)-day public review and comment period for the 2025-2050 Metropolitan Transportation Plan (MTP).
5. Update on the upcoming MPO Policy Committee meeting draft agenda.
6. MPO Updates
 - A. Policy Committee Membership
 - B. Update on an administrative modification to the FY 2025-2028 Transportation Improvement Program (TIP) to reflect letting date changes on three projects.
 - C. Transportation Alternatives Set-Aside (TASA) Program
 - Statewide Call for Projects
 - MPO Call for Projects
 - D. Vision Zero Walktober Proclamation
7. Discussion of old and new business.
8. Adjournment.



Laredo Microtransit Feasibility Study

MPO Technical Committee Meeting

November 12, 2024

Agenda

- Introductions
- Current transit service in Laredo
- Scope of this study
- Discussion of microtransit

Introductions

- Project Team



**Robert McHaney,
AICP, CTP**



**Monisha
Khurana, AICP**



**Jonathan
Brooks**



**Megan
Kennison**



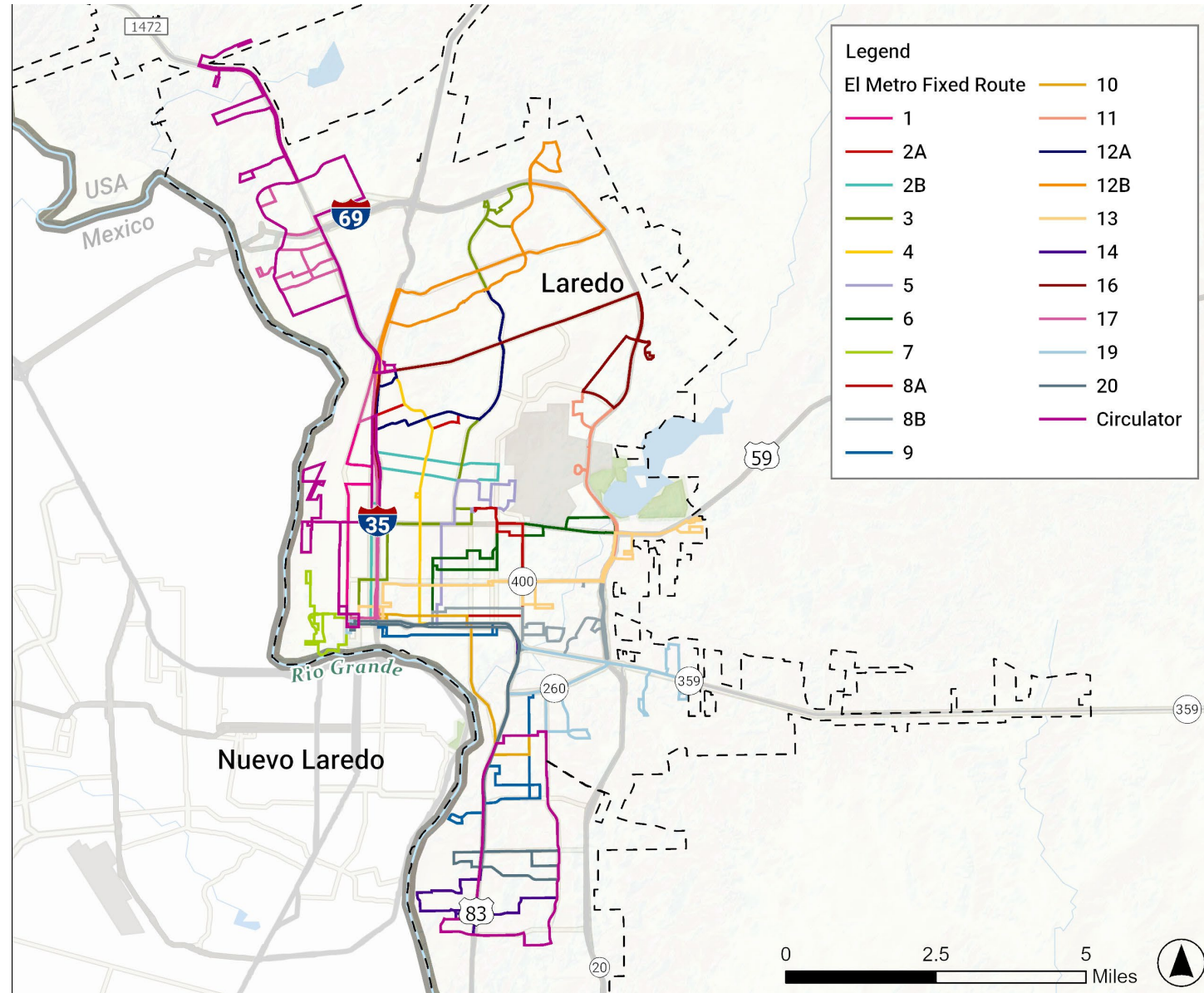
**Cynthia Cruz,
Assoc. AIA**



**Boris Palchik
(RouteSprout)**

Transit in Laredo

- **El Metro**
 - Fixed route service
 - Paratransit (El Lift)
- *Fixed route:*
 - 21 routes and 3 circulators
 - Fixed route: 7 days a week
 - Circulator: M-F service (C3 runs on Saturday)
 - \$2 adults, reduced fares and bus passes available

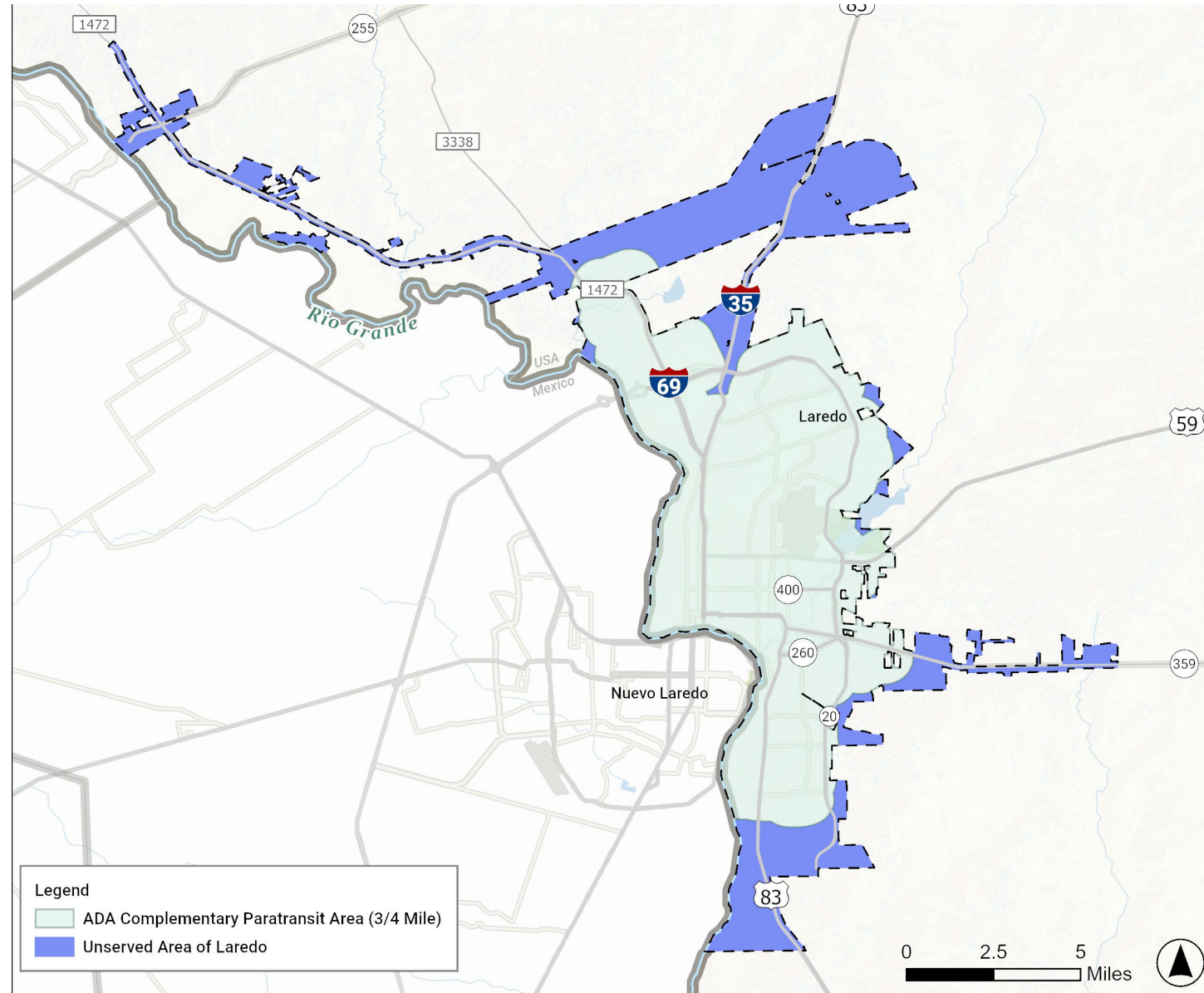


Transit in Laredo

- *Paratransit system (El Lift)*
 - Curb to curb shared-ride system for people with disabilities
 - Service area: $\frac{3}{4}$ of a mile from fixed route system
 - Fees from \$1.75-2.25 (distance)

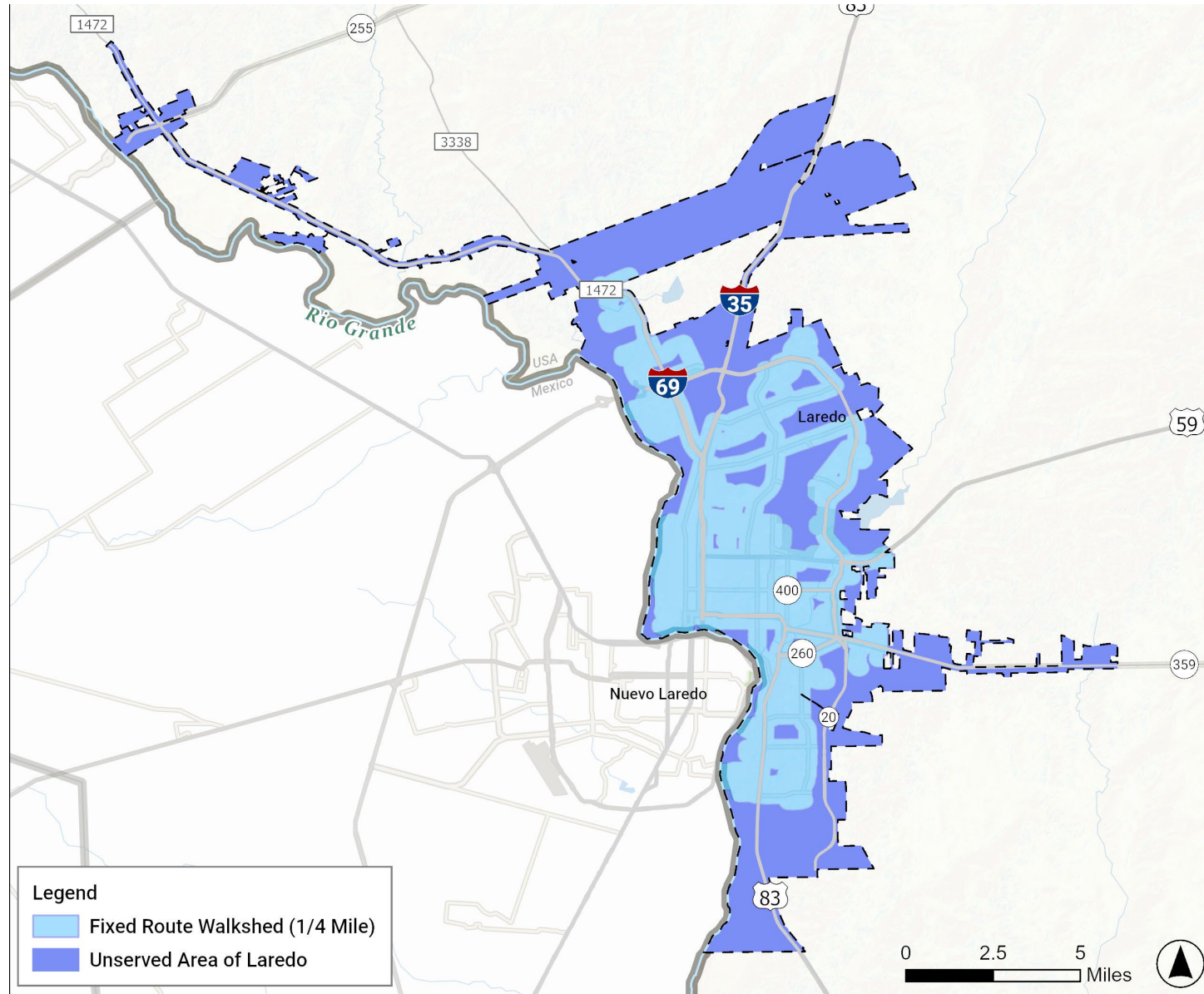


Scheduling via phone call, 1-14 days in advance



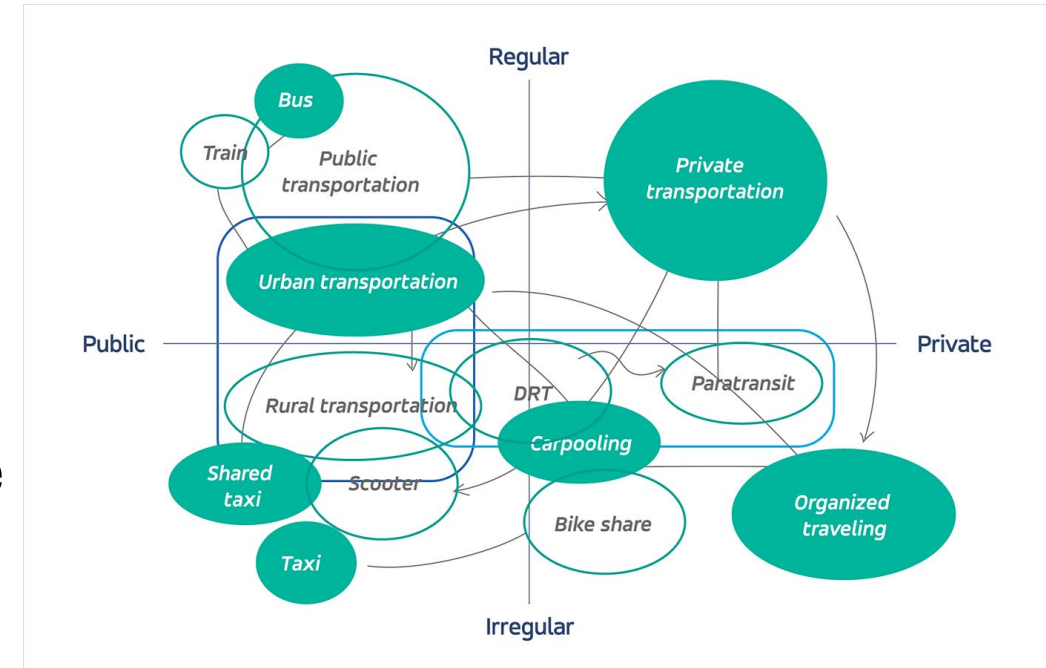
Transit in Laredo

- Certain populations are not served due to being outside of the ¼ mile walkshed



What is microtransit?

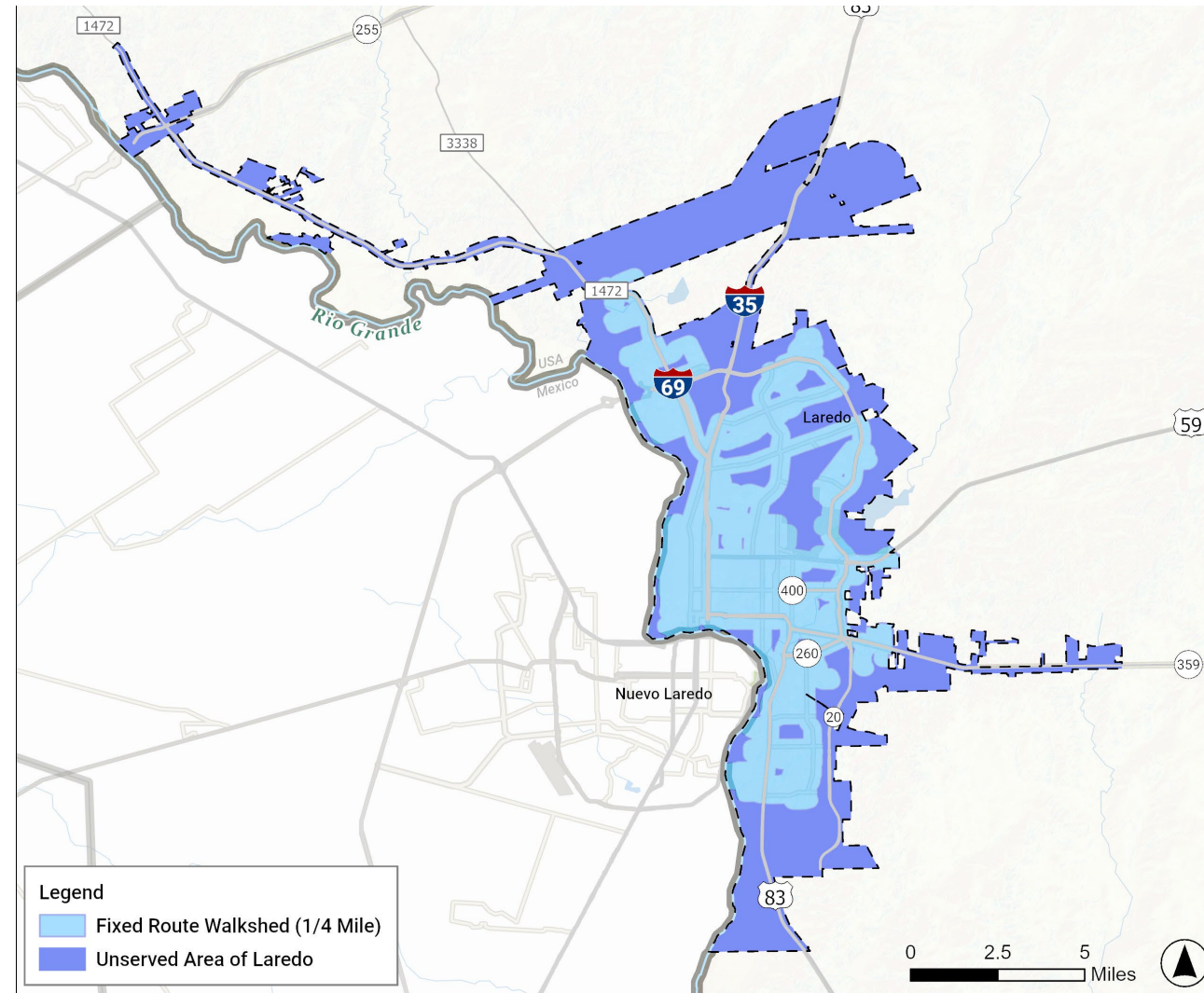
- Hybrid solution between Uber/Lyft (Travel Network Companies) and traditional public transit demand response service
- Works within a geofenced area: **defined zones**
- Can be curb-to-curb or point-to-point service
- On demand
- Smartphone app-based interface to request trips
 - Wait time: ~20 minutes
 - Fare structure: TBD; discounts can be offered to vulnerable populations



(Source: Via)

What are benefits of microtransit?

- Potentially reduced wait times
- Higher quality of service
- Improved accessibility and coverage
- Less capital intensive than fixed route



Peer characteristics

Agency	Location	Vendor	Fare	Number of zones
CapMetro	Austin, TX	Via	\$1.25	11
Metro McAllen	McAllen, TX	RideCo	\$1.75	1
City of Chula Vista	Chula Vista, CA	Circuit	\$2, free for 55+	1
Calexico on Demand	Calexico, CA	Via	\$2	1
Denton County Transportation Authority	Denton, TX	Via	\$1.50 + \$0.50/mile above 4 miles	2
VIA Metropolitan Transit	San Antonio, TX	RideCo	\$1.30	5
Metro Link	Tulsa, OK	RideCo	\$1	5 day, 4 night

Study scope

- Task 1: Case Studies

- How have other agencies dealt with microtransit?



- Task 2: Feasibility Assessment

- Market Analysis
- Service Analysis
- Service Improvement Scenario

- Task 3: Special Use Cases

- Truck, tractor-trailer, students, border crossings

Study scope

- Task 4: Public Involvement
 - Rider survey: November
 - Discussions with operators and stakeholders
 - Public meeting in early 2025
- Task 5: Implementation Framework
 - Considerations for implementation
 - Benefit Cost Analysis
 - Performance Metrics/Evaluation



MICROTRÁNSITO MICROTRANSIT

Encuesta de Pasajeros 2024
2024 Rider Survey



Una encuesta completa significa que puede participar en el sorteo de una tarjeta de regalo Visa por valor de \$100.
A completed survey means you may enter a drawing for a Visa gift card worth \$100.

**¡Su opinión importa!
Your opinion matters!**

Discussion

- What is your first reaction when you think of microtransit?
- What are areas that would be well-served by microtransit?
 - Are certain areas underserved by transit currently?
 - Are there areas with parking and tractor trailer/truck issues?
- Are there certain times of day that microtransit is needed?
- Who would be the target population for microtransit in Laredo?
- What do you foresee as some challenges with implementing microtransit in Laredo?

Thank you!



Robert McHaney, AICP, CTP
Chief of Integrated Planning
The Goodman Corporation
rmchaney@thegoodmancorp.com
(512) 808-8510



LAREDO & WEBB COUNTY
AREA METROPOLITAN PLANNING ORGANIZATION

**LAREDO & WEBB COUNTY AREA METROPOLITAN PLANNING ORGANIZATION
TECHNICAL COMMITTEE**

DATE: 11/12/24	ITEM: 4
SUBJECT: Discussion and recommendation to initiate a twenty (20) day public review and comment period for the 2025-2050 Metropolitan Transportation Plan (MTP).	
INITIATED BY: Staff	STAFF SOURCE: Juan S. Mendive, MPO Director
PREVIOUS ACTION: None	
<p>BACKGROUND:</p> <p>By federal law, each Metropolitan Planning Organization (MPO) is required to develop and maintain a long-range transportation plan, known as a Metropolitan Transportation Plan (MTP), in accordance with 49 USC 5303(i), to accomplish the objectives outlined by the MPO, the state, and the public transportation providers with respect to the development of the metropolitan area’s transportation network and to assure the continued influx of federal transportation funds to the area.</p> <p>The 2025-2050 Laredo Metropolitan Transportation Plan (MTP) is an official intermodal transportation plan developed through a continuing, cooperative, and comprehensive (3-C) planning process.</p> <p>The purpose of this 2025-2050 Laredo MTP is to provide systematic, long-range planning for transportation projects and programs within the metropolitan planning area (MPA) comprised of the City of Laredo, the City of Rio Bravo, and portions of Webb County, Texas. The 2025-2050 Laredo MTP identifies the existing and future transportation needs, financial resources, and project or programming priorities for the MPA and determines how a multi-modal transportation system (including transit, highway, bicycle, pedestrian and accessible transportation) will be managed and operated to meet the region’s economic, transportation, development and sustainability goals from 2025 through the horizon year 2050, while remaining fiscally constrained. The 2025-2050 Laredo MTP also develops coordinated transportation strategies and recommendations including roadway development and operations, truck and rail freight movement, transit operations, bikeways and pedestrian facilities; to provide the necessary transportation facilities essential for the continued mobility and economic vitality of Laredo.</p> <p>The 2025-2050 Laredo MTP, addresses and meets all <i>Moving Ahead for Progress in the 21st Century Act of 2012 (MAP-21)</i>, <i>Fixing America's Surface Transportation Act of 2015 (FAST Act)</i>, and the <i>Infrastructure Investment and Jobs Act (IIJA)</i> planning requirements as provided by the Federal Highway Administration (FHWA) and Federal Transit Administration (FTA).</p>	
STAFF RECOMMENDATION: Staff recommends approval.	COMMITTEE RECOMMENDATION: The Technical Committee recommends _____



November 12, 2024

Update on the 2025-2050 Metropolitan Transportation Plan (MTP)

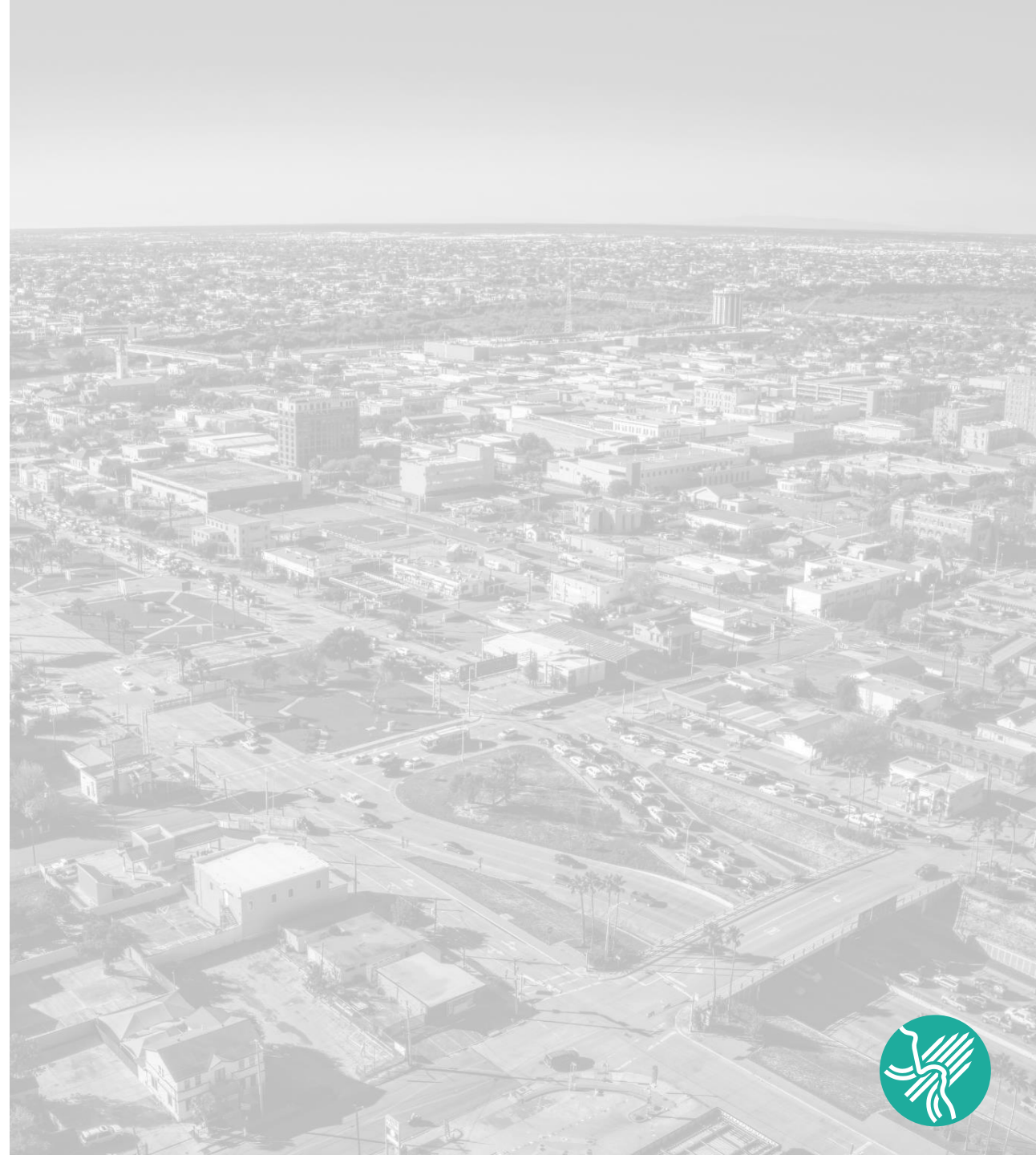
MPO Technical Committee Meeting



**Metropolitan
Transportation
Plan 2025-2050**
Laredo & Webb Co.

Agenda

- Background on MTP
- Existing Conditions
- Public and Stakeholder Involvement
- Project Nominations and Evaluation
- Next Steps



MPO Functions

- Comprehensive, cooperative, and continuing (3-C) regional transportation planning for urbanized area with populations of 50,000 or more.
- MPOs facilitate the 3-C planning process, establishing a means for local governments to have input on how federal investments are made within their communities.
- MPOs are required to develop a Metropolitan Transportation Plan (MTP).
- The LWCAMPO is the MPO for the urbanized area comprised of the City of Laredo, City of Rio Bravo, and portions of Webb County.



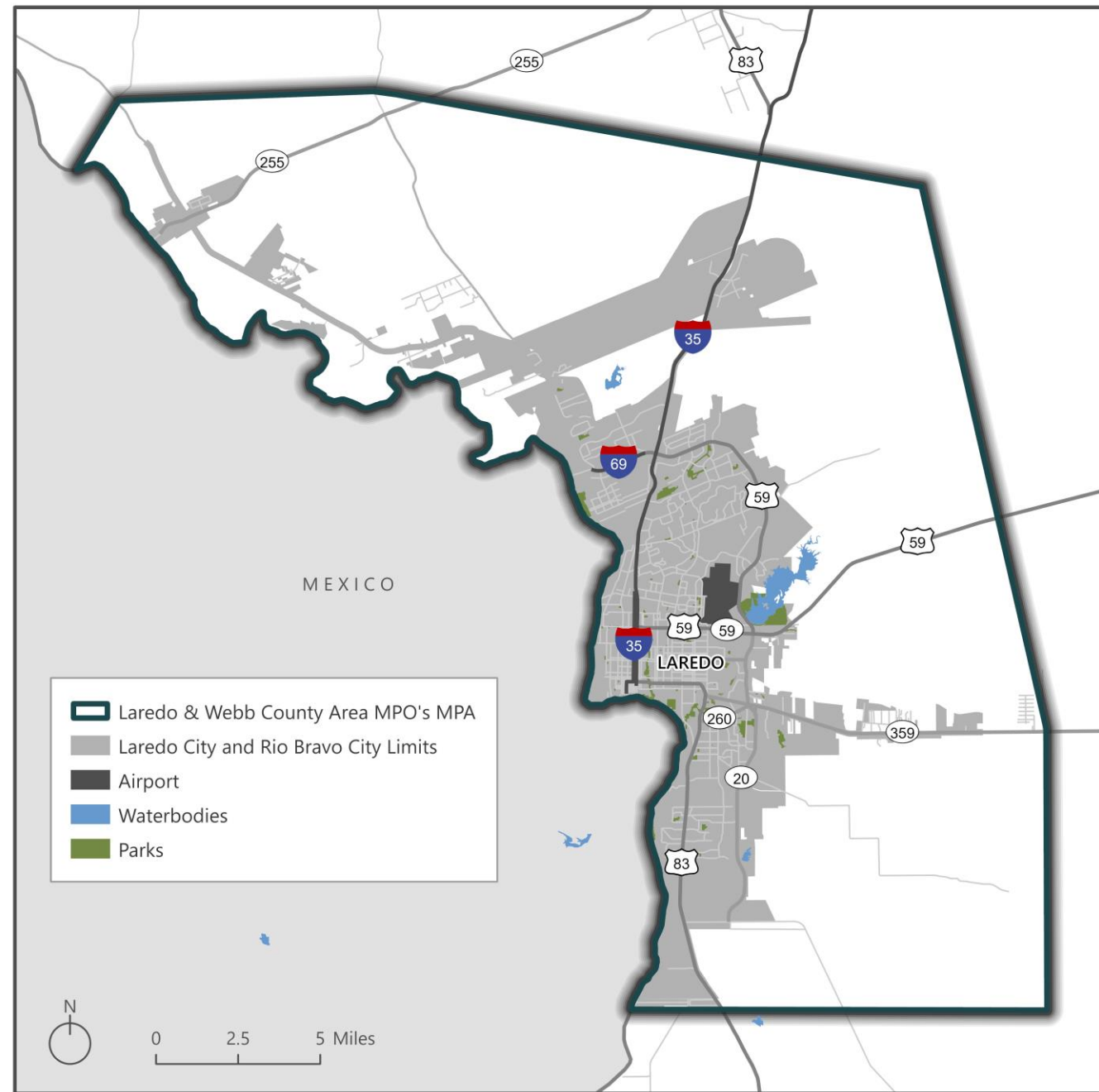
Metropolitan Transportation Plan (MTP)

- Planning Horizon: 25 years
- Updated: Every 5 years
- Purpose: The MTP establishes the long-term transportation policy agenda for the region. The MTP outlines regional transportation priorities and identifies transportation projects to meet regional transportation goals over the plan's horizon, while remaining fiscally constrained.



Metropolitan Planning Area (MPA)

- City of Laredo
- City of Rio Bravo
- Portions of Webb County
(about 12 %)



Laredo & Webb County Area MPO's MPA

MTP Goals and Objectives



Safety - Improve safety of transportation system across all modes and for all users, and achieve zero transportation-related serious injuries and fatalities



Asset Preservation – Maintain and preserve existing transportation assets and infrastructure to keep the overall transportation system in good condition



Economic Vitality and Competitiveness – Sustain an effective and efficient freight network and expand access to economic opportunities in the region



System Reliability – Provide an efficient surface transportation system that maintains travel time reliability and reduces congestion



Innovation and Technology – Leverage latest research and technologies to enhance the transportation system



MTP Goals and Objectives



Connectivity – Develop an integrated and connected transportation network



Equity – Promote equitable access to safe and affordable mobility options, and avoid unequitable adverse impacts on communities



Environmental Sustainability – Protect and enhance natural, historic, and cultural resources in the region



Climate Resilience – Reduce greenhouse gas emissions and enhance resilience of the overall transportation system against extreme climate events

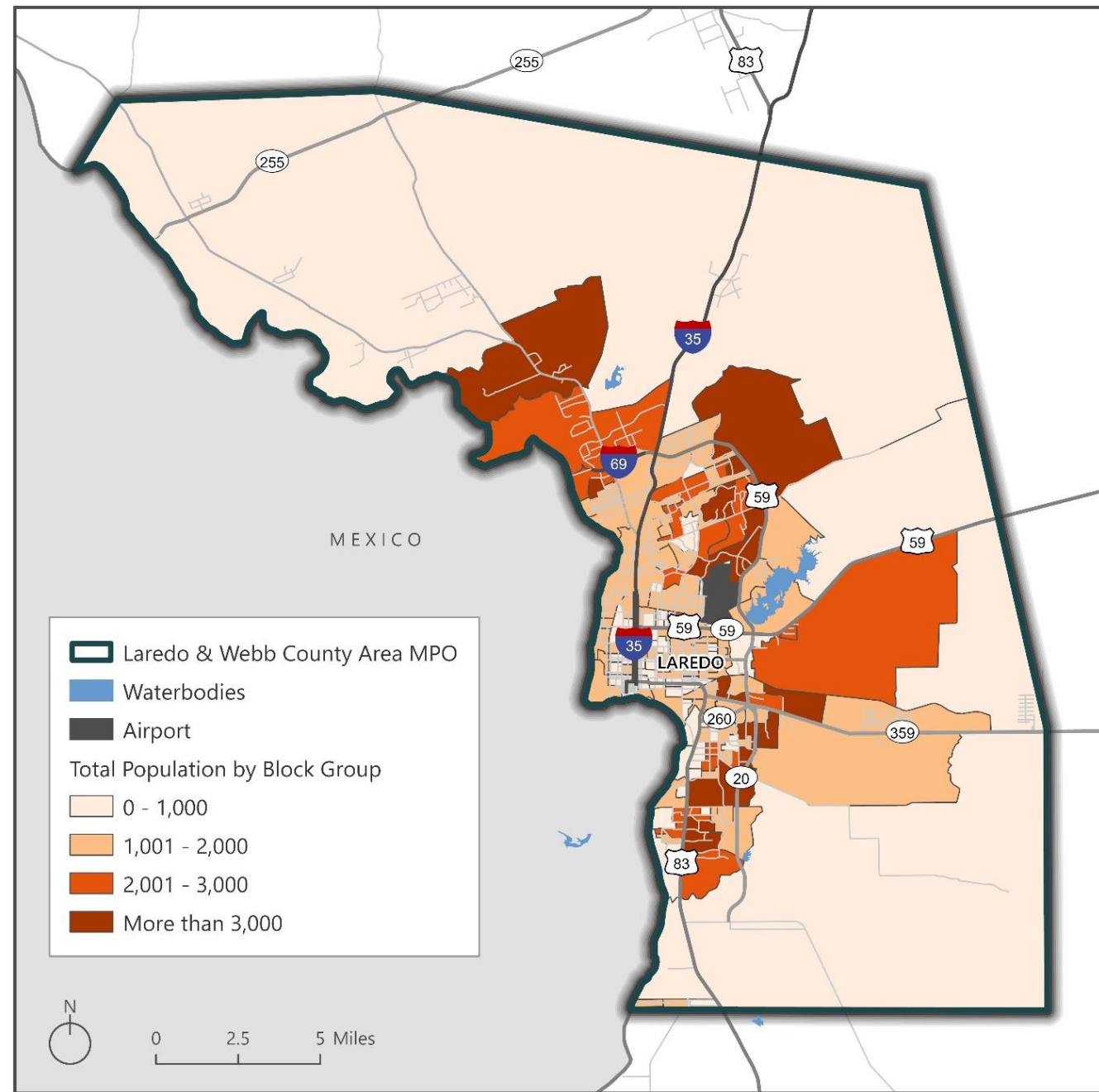


Sustainable Financing – Identify responsible financing options that are sustainable in the long run



Existing Population

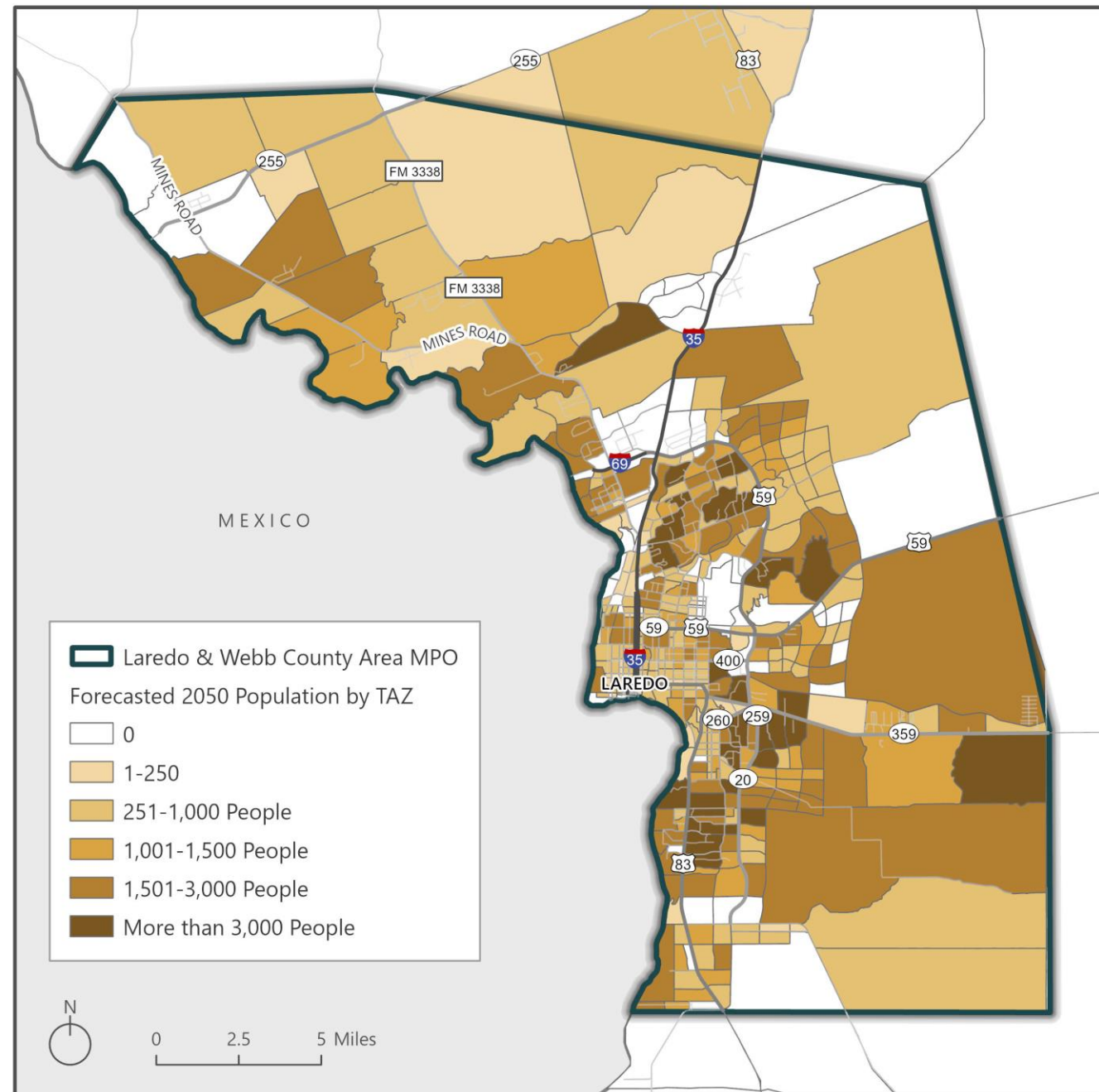
GEOGRAPHY	2010 CENSUS	2020 CENSUS	2022 ACS 5-YEAR ESTIMATE
City of Laredo	236,091	255,205	255,293
LWCAMPO MPA	246,279	264,047	264,487
Webb County	250,304	267,114	267,282
Texas	25,145,561	29,145,505	29,243,342
United States	308,745,538	331,449,281	331,097,593



TOTAL POPULATION BY BLOCK GROUP

Population Forecast – Year 2050

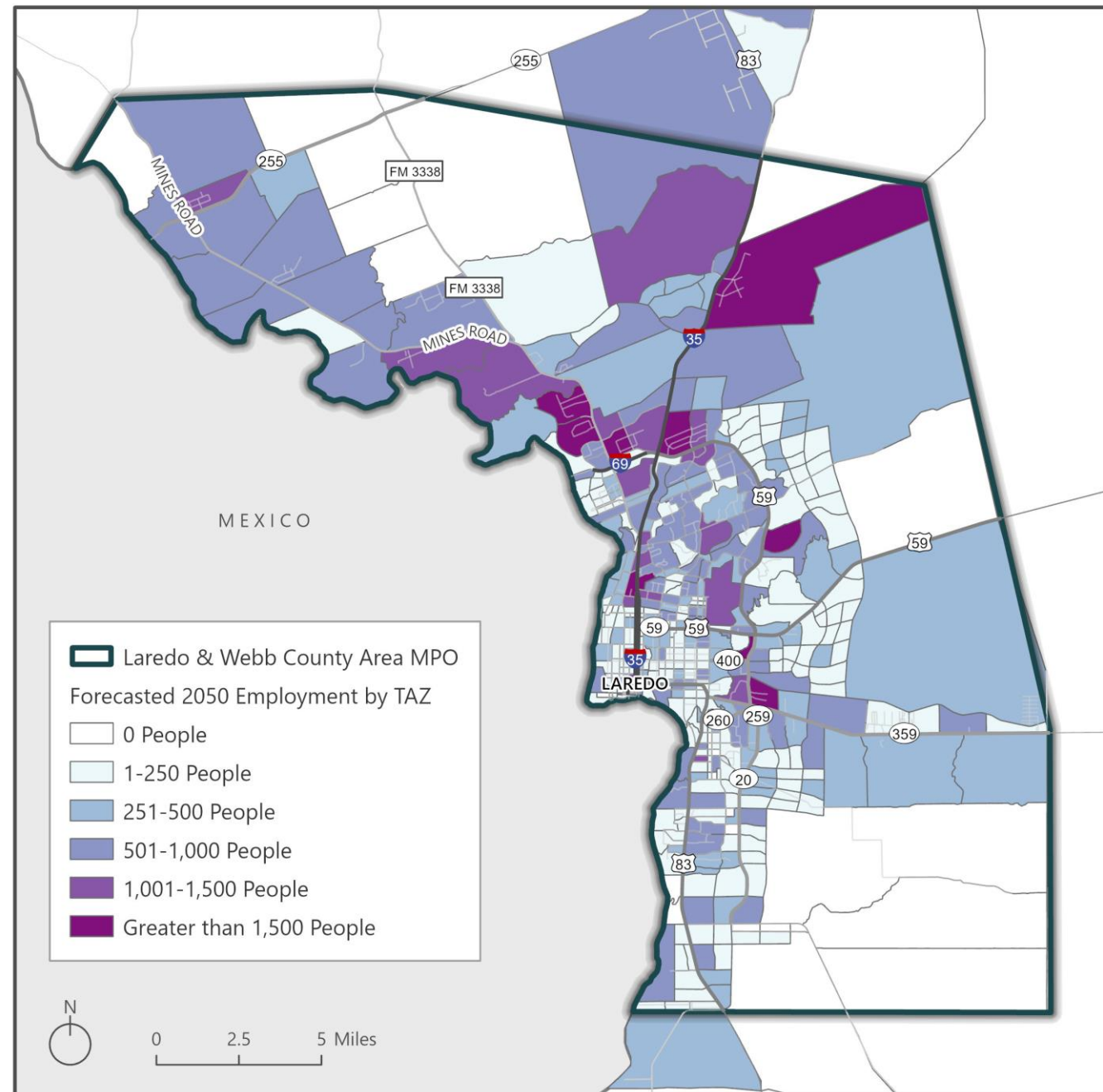
- The MPO utilizes a Travel Demand Model (TDM) to forecast regional growth.
- Population was forecasted from base year 2018 to forecast year 2050 by Traffic Analysis Zones (TAZ).
- The total population is forecasted to **489,977** by 2050.



LAREDO & WEBB COUNTY MPO FORECASTED 2050 POPULATION

Employment Forecast – Year 2050

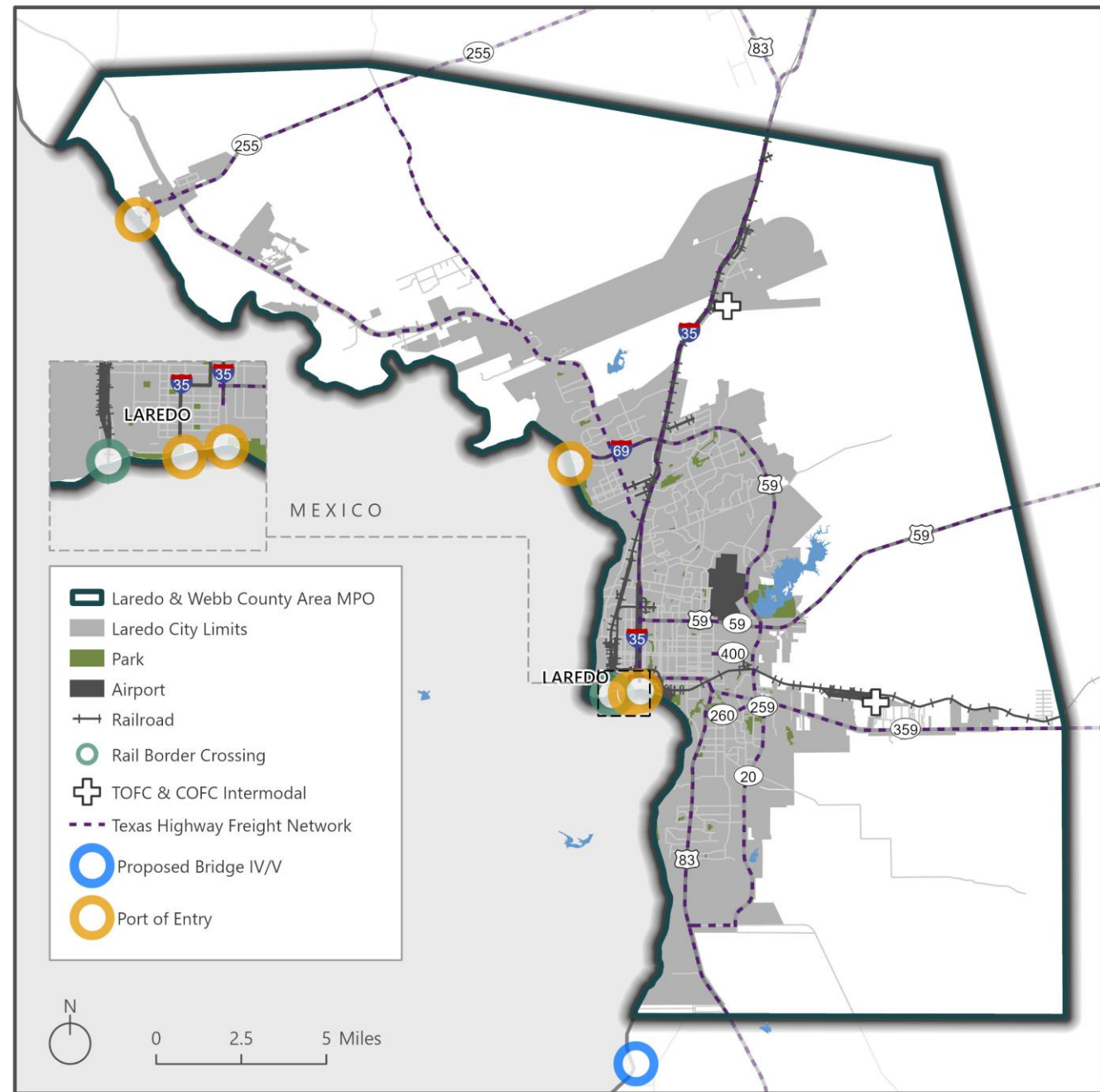
- The TDM is also utilized to forecast employment growth.
- Employment was forecasted from base year 2018 to forecast year 2050 by Traffic Analysis Zones (TAZ).
- The total employment is forecasted to **187,780** jobs by 2050.



LAREDO & WEBB COUNTY MPO FORECASTED 2050 EMPLOYMENT

Freight Network

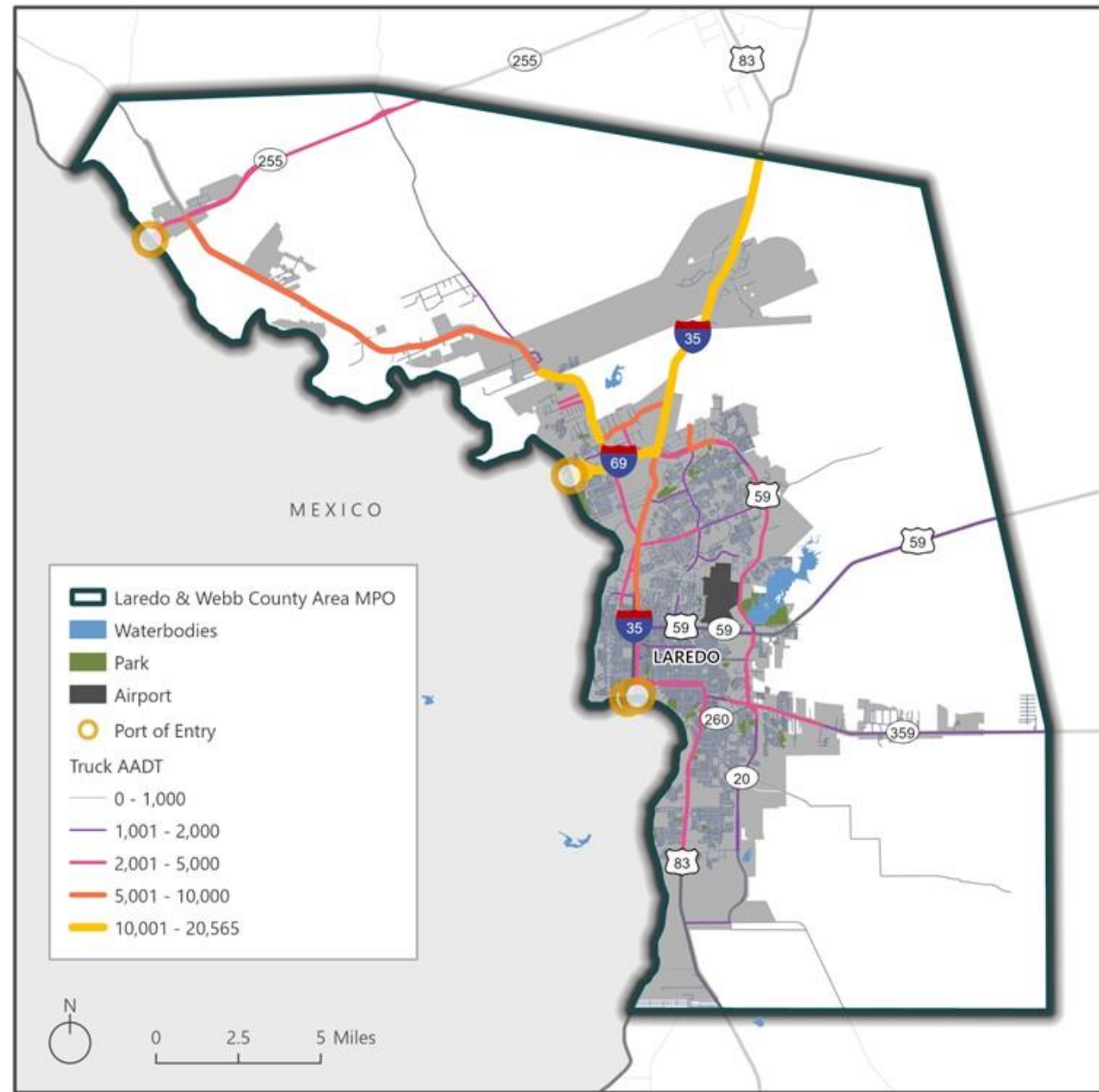
Laredo became the nation's top port in 2023 with \$320 billion in total U.S. trade.



LAREDO & WEBB COUNTY MPO FREIGHT NETWORK

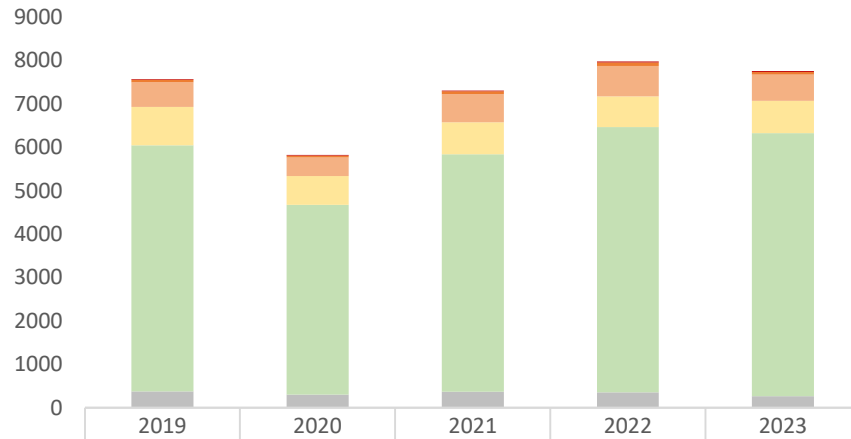
Truck Traffic

- Truck traffic contributes significantly to the AADT for designated truck routes within the MPA.
- A large amount of the AADT of I-35 and I-69 is linked to truck traffic, reaching a maximum of 20,565.
- These roadways provide access to The World Trade International Bridge, a port of entry exclusively for commercial traffic.



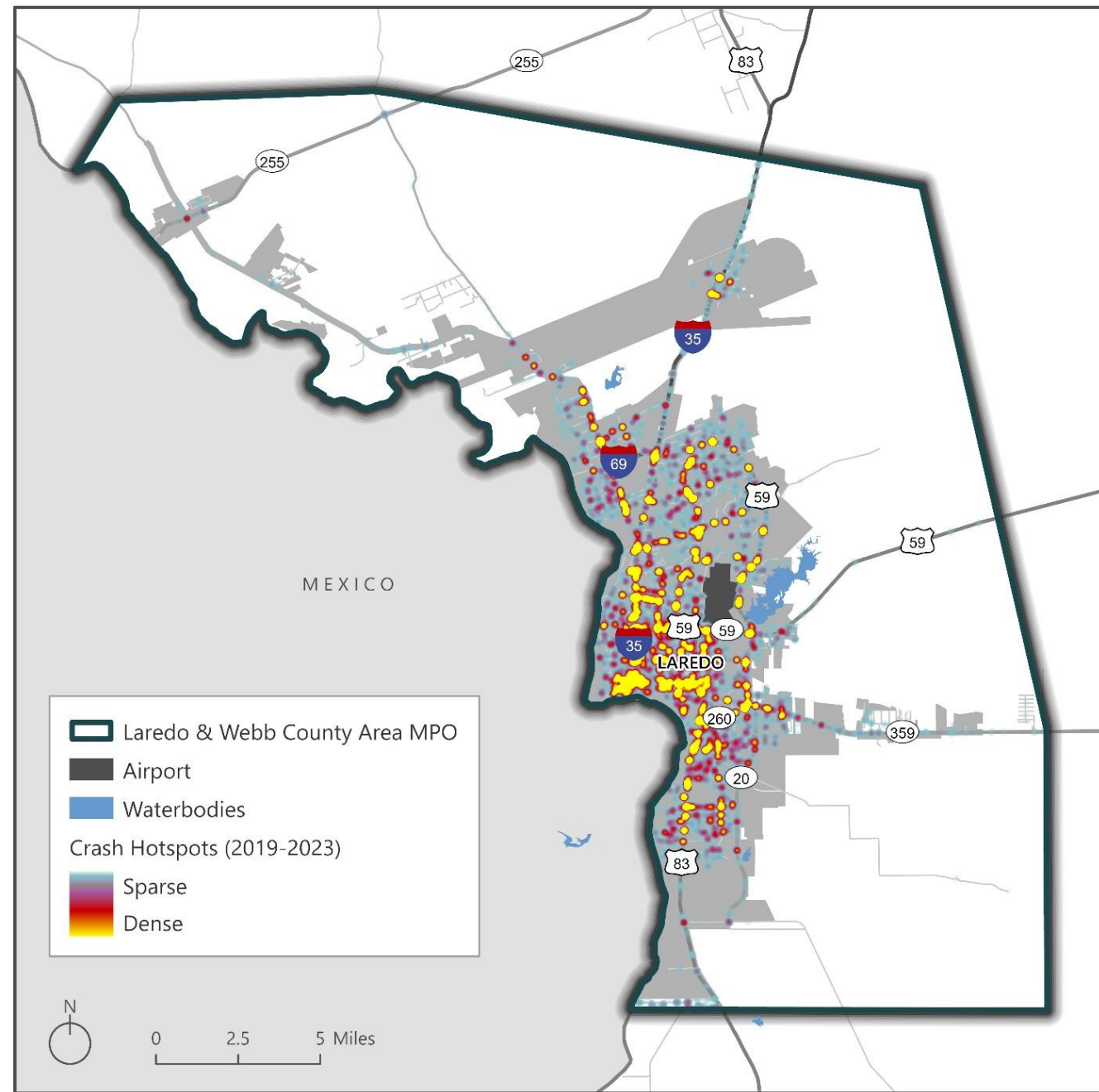
LAREDO & WEBB COUNTY MPO FREIGHT NETWORK

Safety and Security



■ Fatal Injury (K)	13	11	15	22	17
■ Suspected Serious Injury (A)	61	44	68	79	65
■ Suspected Minor Injury (B)	570	430	647	701	605
■ Possible Injury (C)	882	659	739	703	738
■ Not Injured (N)	5666	4372	5466	6107	6057
■ Unknown	377	303	370	359	269

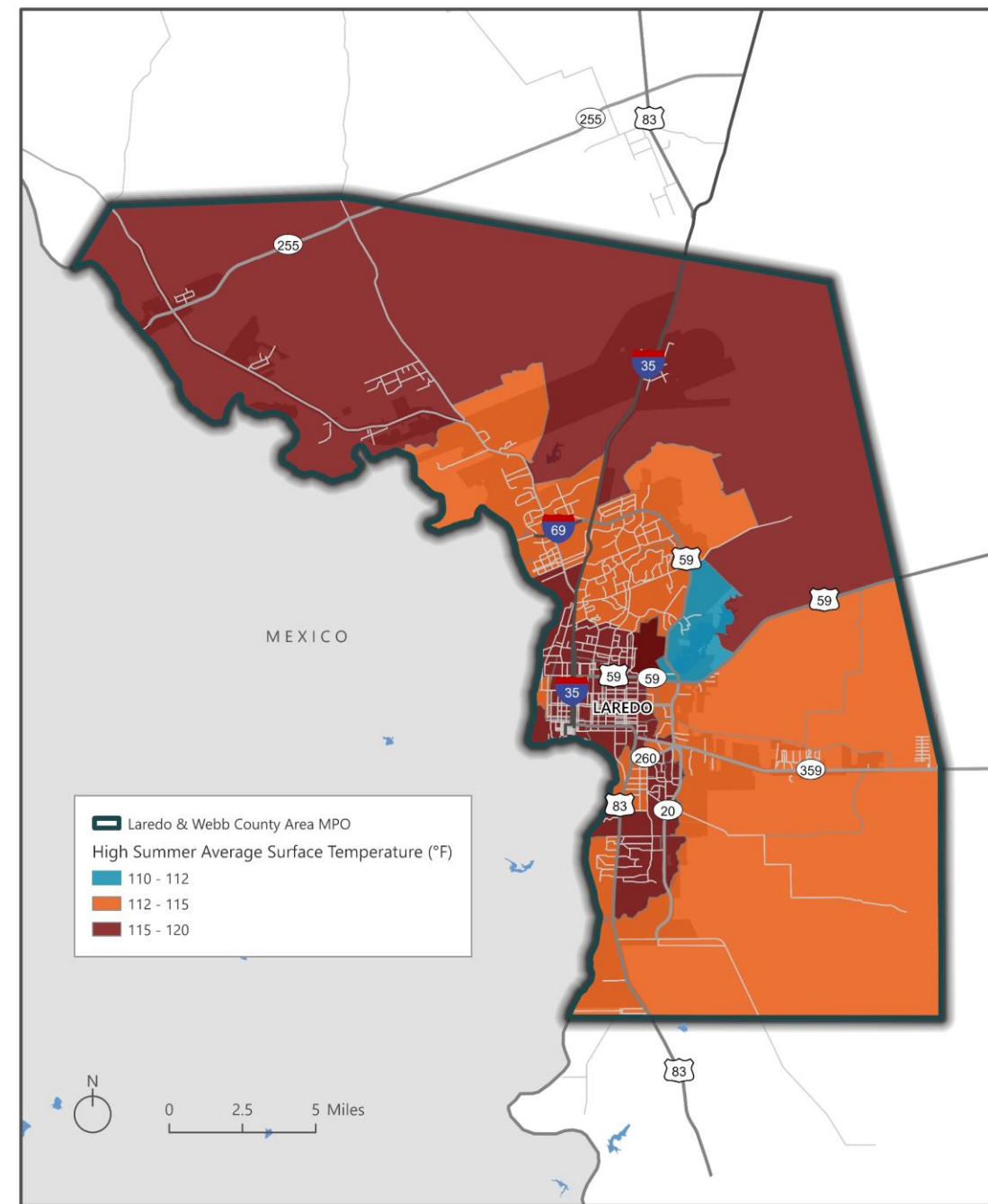
■ Unknown ■ Not Injured (N) ■ Possible Injury (C)
 ■ Suspected Minor Injury (B) ■ Suspected Serious Injury (A) ■ Fatal Injury (K)



CRASH HOTSPOTS (2019-2023)

Resiliency

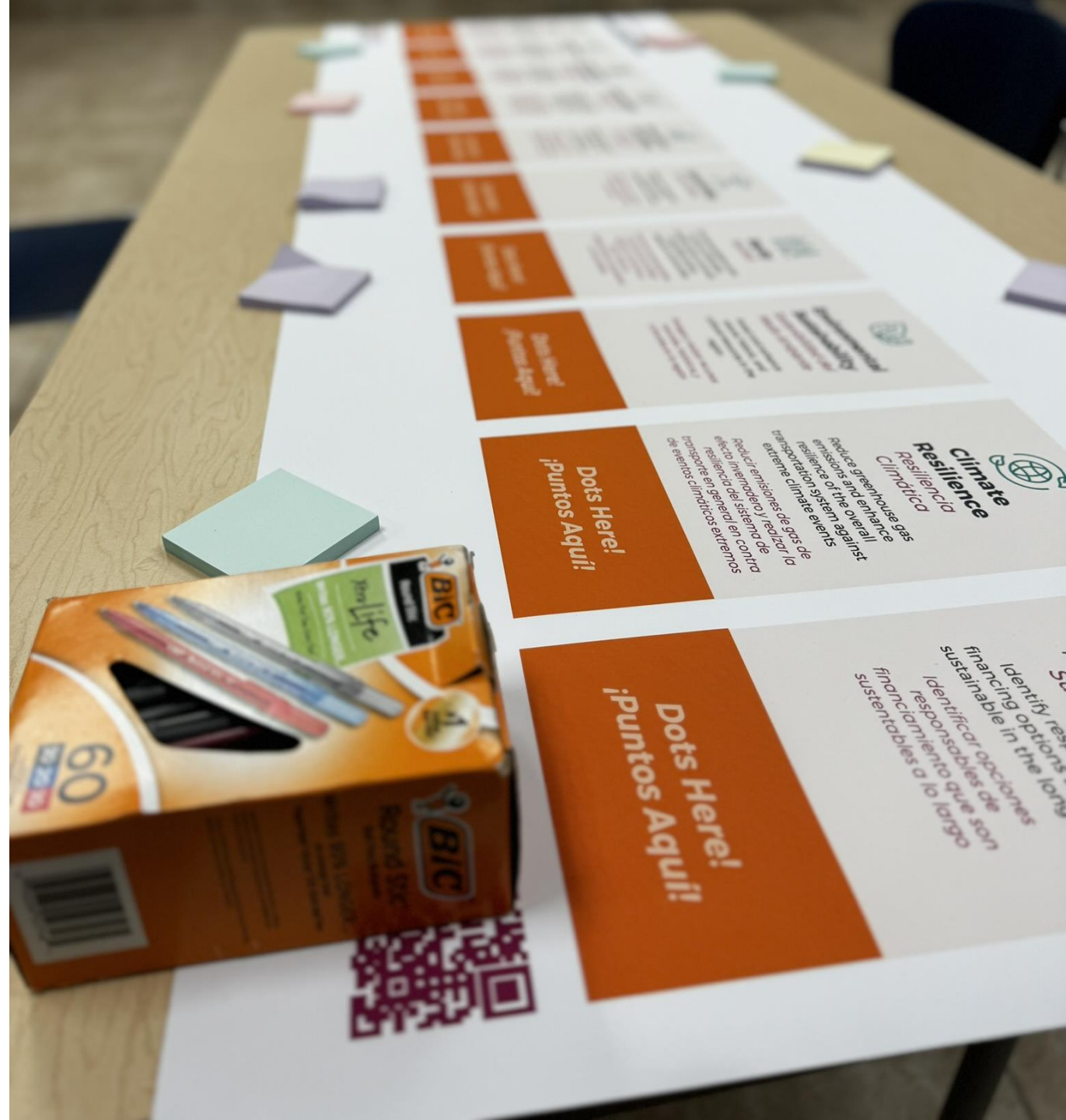
- Planning Goal: Improve the resiliency and reliability of the transportation system and reduce or mitigate stormwater impacts of surface transportation.
- As part of the MTP development, analyzing transportation system vulnerabilities to a variety of extreme weather events, including high surface temperature events.



HIGH SUMMER AVERAGE SURFACE TEMPERATURES

Public & Stakeholder Involvement

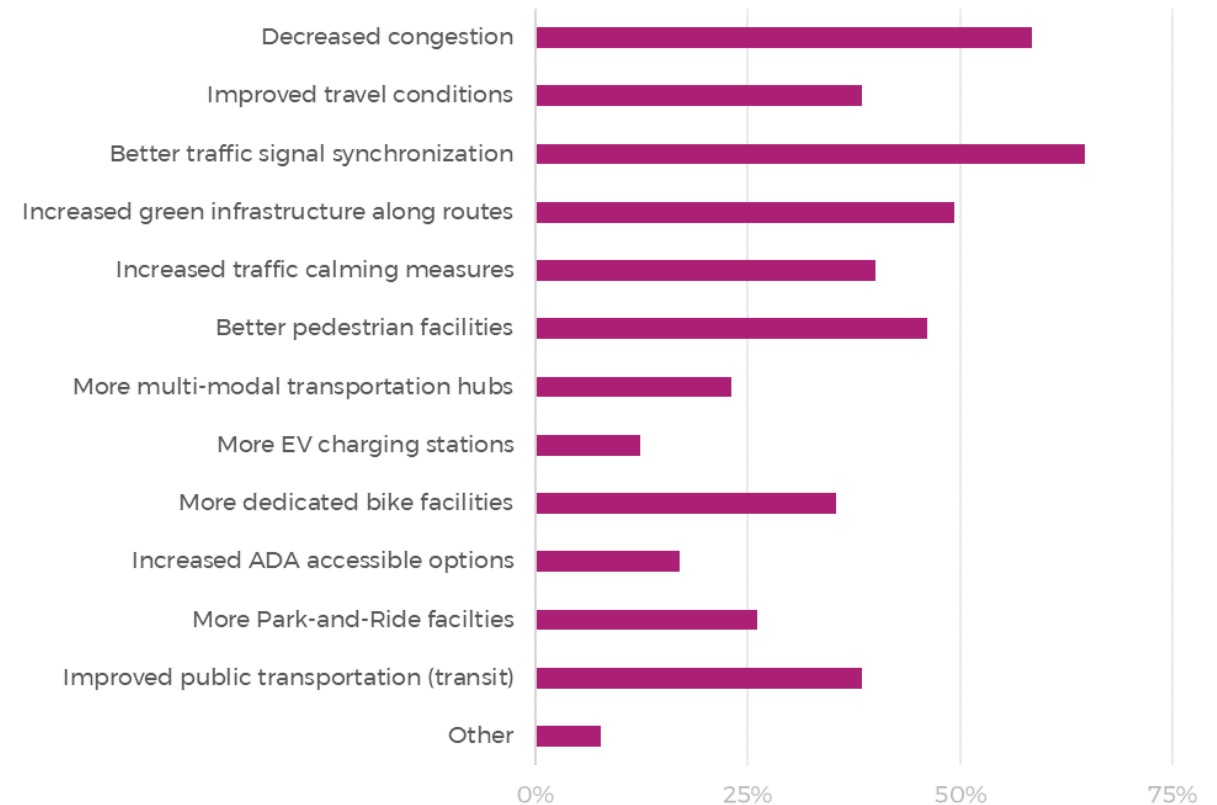
- Technical Committee
 - April 4th (Introduction and SWOT Analysis)
 - August 27th (Project Evaluation Criteria)
 - September 10th (Project Scoring Overview)
- Stakeholder Meetings
 - El Metro
 - TxDOT
 - RMA
 - Economic Development and Trade
 - Community Development and Housing Agencies
- Public Meetings
 - Public Meeting #1 on May 23, 2024. About 40 attendees.
 - Public Meeting #2 to be held on November 21, 2024.



Survey

- The survey was launched at the first public meeting.
- Responses collected May 23 through July 19.
- Received 65 responses.
- Key Takeaways:
 - Most respondents travel by personal vehicle and feel their travel times are long and congested.
 - Conditions for biking and walking are perceived as unsafe and require improvements.


Transportation System Priorities, Survey Results



Project Nominations

- Public Call for Project Nominations held August 30 through September 20.
- Received 19 project nominations total:
 - 2 from citizens
 - 4 from the RMA
 - 13 from TxDOT





Metropolitan Transportation Plan 2025-2050
Laredo & Webb Co.

PROJECT NAME / NOMBRE DEL PROYECTO:

PROJECT LIMITS / LIMITES DEL PROYECTO:

DESCRIPTION / DESCRIPCIÓN:

PUBLIC PROJECT NOMINATION FORM
The Laredo Metropolitan Planning Organization (MPO) is in the process of updating their Metropolitan Transportation Plan (MTP). The MTP is a long-range transportation plan that will guide transportation improvements in the region over the next 25 years. The MPO is accepting public nominations for proposed transportation projects of regional significance to be considered in the plan. Proposed projects may include highway, aviation, transit, bicycle and pedestrian improvements.

FORMA PUBLICA DE NOMINACIÓN DE PROYECTOS
La Organización de Planificación Metropolitana de Laredo (MPO) esta en el proceso de poner al corriente su Plan de Transporte Metropolitano (MTP). El MTP es un plan de transporte de largo plazo que guía los mejoramientos de transporte en la región sobre los siguiente 25 años. El MPO esta aceptando nominaciones para proyectos de transporte propuestos con significancia regional para considerar incluirlos en el plan. Los proyectos propuestos pueden incluir carreteras, aviación, transito, y mejoramientos para ciclistas y peatones.

Please mail or email forms to:
Favor de enviar o mandar por correo electrónico la forma a:

Laredo & Webb County Area MPO
MTP 2025-2050 Update
1413 Houston St, Laredo, TX 78040
Email: robert.guthart@wsp.com

Submit public project nomination form at the MPO website at <http://www.laredompo.org>
Envíe el formulario de nominación de proyecto público en el sitio web de la MPO en <http://www.laredompo.org>

Please provide your response back to us **September 20, 2024**
Por favor envíenos su respuesta antes del **20 de septiembre de 2024**

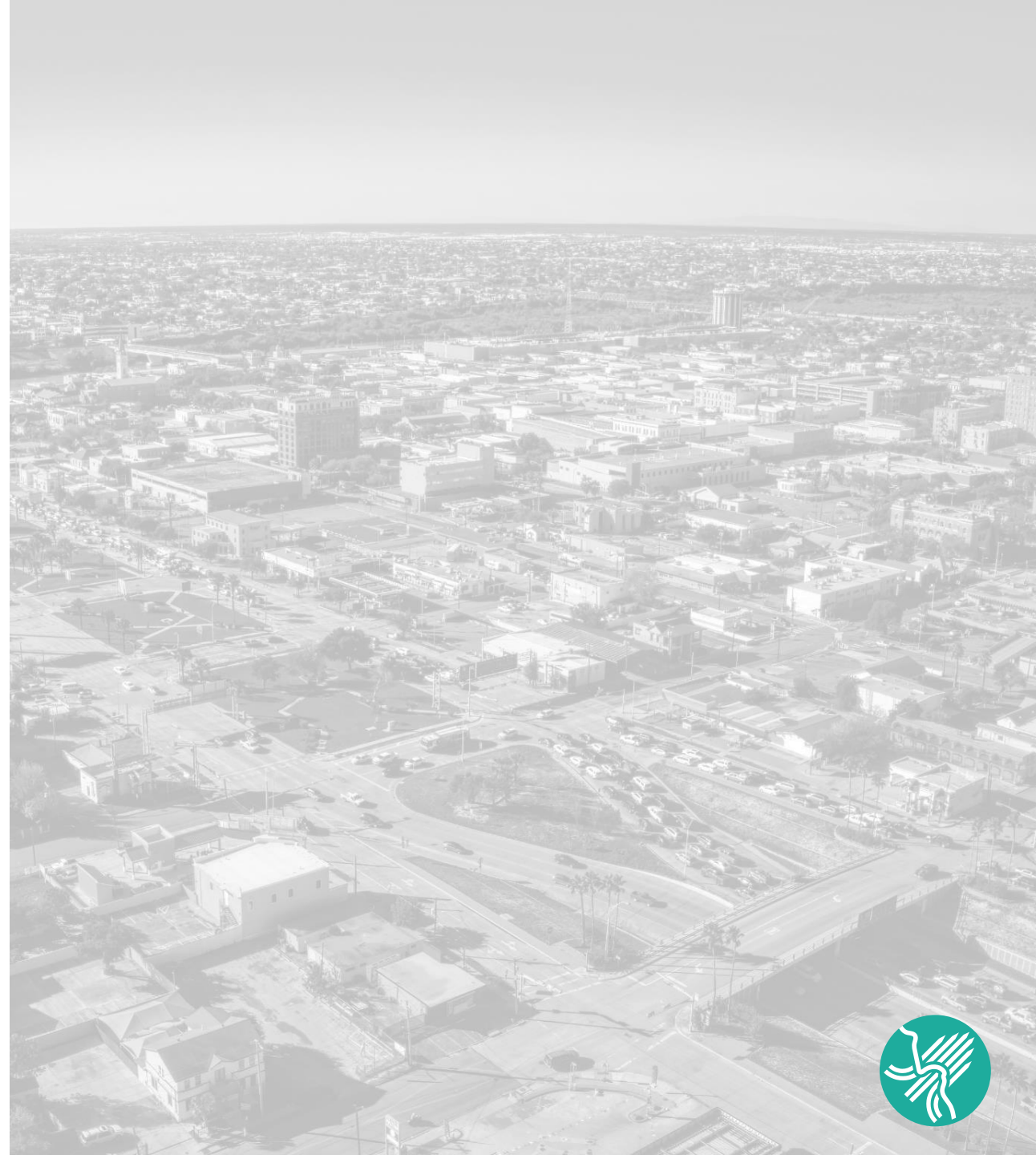
Project Evaluation and Prioritization

- Updated project evaluation criteria:
 - Objective criteria: Data-driven criteria aligning with the MTP goals.
 - Subjective criteria: Criteria to align scoring with stakeholder and community priorities.



Next Steps

- Complete draft MTP document.
- Present draft MTP to Policy Committee.
- Release draft MTP for 20-day public comment period.
- Hold Public Meeting November 21.
- Adopt final MTP.





Thank you!



Metropolitan Transportation Plan 2025-2050

Laredo & Webb County Area



LAREDO & WEBB COUNTY
AREA METROPOLITAN PLANNING ORGANIZATION

Visit laredompo.org for
more information about our
second **Public Meeting**

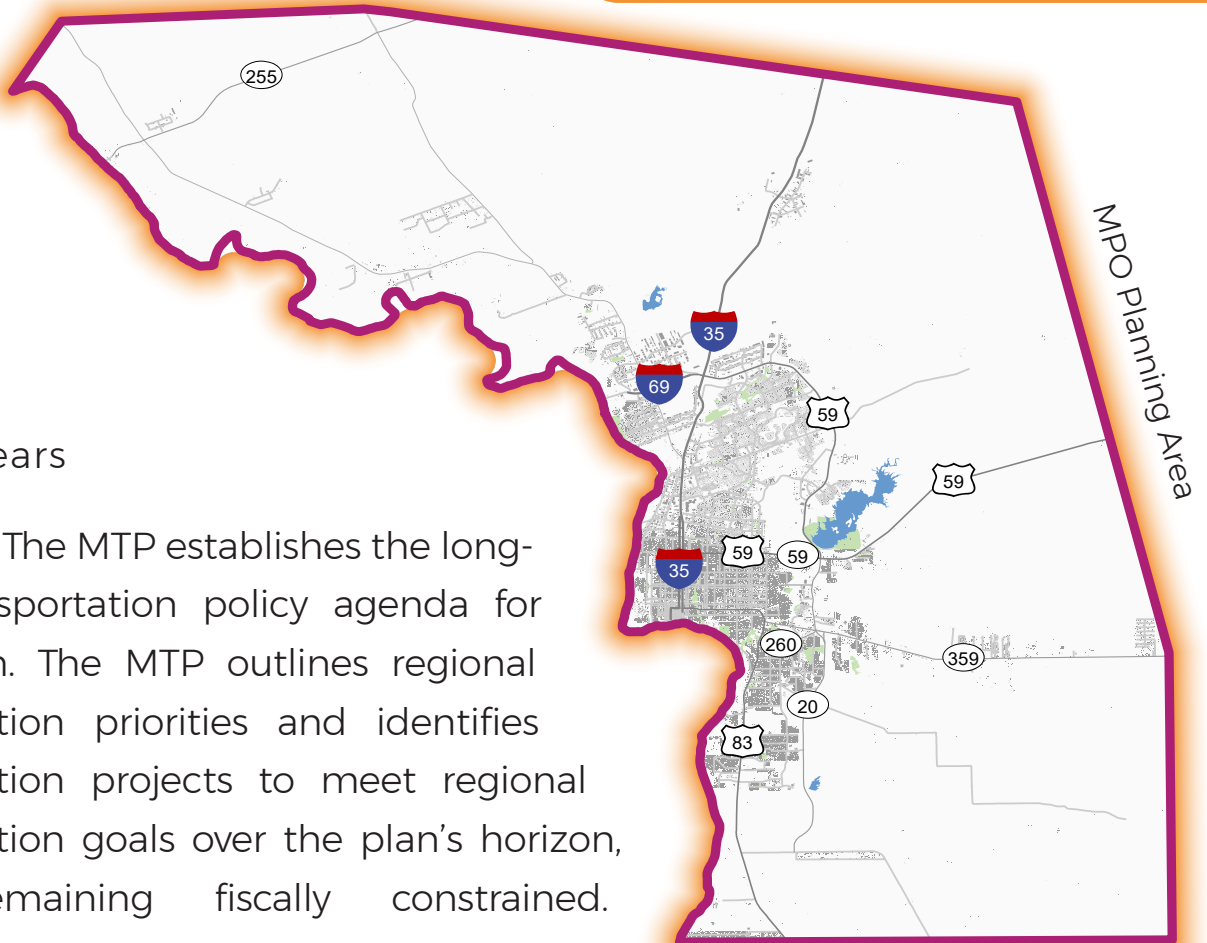
→ **Horizon:**

25 years

→ **Updated:**

Every 5 years

→ **Purpose:** The MTP establishes the long-term transportation policy agenda for the region. The MTP outlines regional transportation priorities and identifies transportation projects to meet regional transportation goals over the plan's horizon, while remaining fiscally constrained.



SAVE THE DATE!



→ Join us **November 21st** from **5:30 PM to 7:30 PM** at **Joe A. Guerra Laredo Public Library (1120 E. Calton Road, Multipurpose Room)**

→ Opening Remarks at 6:00 PM

→ Refreshments compliments of the City of Laredo, Economic Development Department



MPO POLICY COMMITTEE MEETING

www.laredompo.org

Meeting Date & Time: November 20, 2024 at 1:30 PM

Meeting Location: City of Laredo Council Chambers, 1110 Houston St., Laredo, Texas 78040

Meeting Link: <http://laredotx.swagit.com/live>

Laredo TV: Spectrum TV channel 1300

AGENDA:

- I. CHAIRPERSON TO CALL MEETING TO ORDER
- II. CHAIRPERSON TO CALL ROLL
- III. CITIZEN COMMENTS

Speakers are required to fill out witness cards, which must be submitted to MPO Staff no later than 1:45 p.m. the day of the meeting. Speakers shall identify themselves at the microphone. Comments are limited to three (3) minutes per speaker. No more than three (3) persons will be allowed to speak on any side of an issue. Should there be more than three (3) people who wish to speak on a specific issue, they should select not more than three (3) representatives to speak on their behalf. The presiding officer may further limit public on the interest of order or time. Speakers may not transfer their minutes to any other speaker. Comments should be relevant to MPO business and delivered in a professional manner. No derogatory remarks shall be permitted.

IV. ITEMS REQUIRING POLICY COMMITTEE ACTION:

- A. Approval of the minutes for the meeting held on October 16, 2024.
- B. Receive public testimony and initiate a 20-day public review and comment period for the draft 2025-2050 Metropolitan Transportation Plan (MTP). A presentation on the draft 2025-2050 MTP will be provided by a representative of WSP.
- C. Discussion with possible action on canceling the December 18th, 2024 Policy Committee meeting.

MPO POLICY COMMITTEE MEETING AGENDA

V. REPORT(S) AND PRESENTATIONS (No action required).

- A. Status report by the Regional Mobility Authority (RMA).
- B. TxDOT Project Updates
- C. Update by MPO staff on an administrative modification to the FY 2025-2028 Transportation Improvement Program (TIP) to reflect letting date changes on three projects.

VI. DIRECTOR'S COMMENTS

VII. COMMUNICATIONS

VIII. ADJOURNMENT

NOTICE INFORMATION:

Notice of this meeting was posted at the municipal government offices, 1110 Houston Street, Laredo, Texas, at a place convenient and readily accessible to the public at all times. Said notice was posted on Friday, November 15, 2024 by 5:00 PM. The agenda and meeting information was also posted online at <https://www.laredompo.org/agendas-minutes/>.

All meetings of the MPO Committee are open to the public. Persons who plan to attend this meeting and who may need auxiliary aid or services such as: interpreters for persons who are deaf or hearing impaired, readers of large print or Braille, or a translator for the Spanish language are requested to contact MPO Staff at (956) 794-1605, or via email at aavigil@ci.laredo.tx.us at least two working days prior to the meeting so that appropriate arrangements can be made. Materials in Spanish may also be provided upon request.

Disability Access Statement: This meeting is wheelchair accessible. The accessible ramps are located at 1110 Victoria and 910 Flores. Accessible parking spaces are located at City Hall, 1110 Victoria.

INFORMACIÓN DE AVISO:

Un aviso de esta reunión ha sido publicado en las oficinas del gobierno municipal ubicadas en el 1110 de la calle Houston St., Laredo, Texas, en un lugar conveniente y accesible en todo momento para el público. Dicho aviso fue publicado el viernes, 15 de noviembre del 2024 a las 5:00 PM. La agenda e información adicional sobre la reunión se han publicado también en línea en el siguiente enlace: <https://www.laredompo.org/agendas-minutes/>.

Todas las reuniones del Comité del MPO están abiertas al público. Personas que planean asistir a esta reunión y que pueden necesitar ayuda o servicios auxiliares como: interpretes para personas con discapacidad auditiva, lectores de letra grande o en Braille, o un traductor para el idioma español deben comunicarse con el personal del MPO al (956) 794-1605 o por correo electrónico aavigil@ci.laredo.tx.us por lo menos dos días laborales antes de la reunión para que

MPO POLICY COMMITTEE MEETING AGENDA

se puedan hacer los arreglos apropiados. Material en español está disponible mediante una petición.

Declaración de Acceso a la Discapacidad: Esta reunión permite el acceso a personas en silla de ruedas. Las rampas de acceso se ubican en el 1110 de la calle Victoria y en el 910 de la avenida Flores. Los espacios de estacionamiento para discapacitados se encuentran en 1110 Victoria St.

Información en español: Si usted desea más información en español o si desea explicación sobre el contenido, favor de llamar al teléfono (956) 794-1605 o comunicarse con nosotros mediante correo electrónico a aavigil@ci.laredo.tx.us.

POLICY COMMITTEE MEMBERSHIP:

LWCAMPO Chairperson

Honorable Tano E. Tijerina, Webb County Judge

LWCAMPO Vice-Chairperson

Honorable Dr. Victor D. Treviño, City of Laredo Mayor

City of Laredo Representatives

Honorable Ruben Gutierrez, Jr., Mayor Pro-Tempore, District V

Honorable Ricardo Rangel Jr., City Councilmember, District II

County of Webb Representatives

Honorable Jesse Gonzalez, Webb County Commissioner, Pct. 1

Honorable John Galo, Webb County Commissioner, Pct. 3

Laredo Mass Transit Board Representative

Honorable Vanessa Perez, City Councilmember, District VII

State Representative

Mr. Epigmenio "Epi" Gonzalez, P.E., TxDOT District Engineer

Member at Large Representative

Jed A. Brown

Ex-Officio Representatives

Honorable Judith Zaffirini, State Senator, District 21

Honorable Richard Raymond, State Representative, District 42

Honorable Tracy O. King, State Representative, District 80

AGENDA REVIEWED:

Juan S. Mendive, AICP
LWCAMPO Director

Mario I. Maldonado, Jr.
Laredo City Secretary

MPO Updates

- A. Policy Committee Membership
- B. Update on an administrative modification to the FY 2025-2028 Transportation Improvement Program (TIP) to reflect letting date changes on three projects.
- C. Transportation Alternative Set-Aside (TASA) Program
- D. Vision Zero Walktober Proclamation



LAREDO & WEBB COUNTY

AREA METROPOLITAN PLANNING ORGANIZATION

Administrative Modification to FY 2025-2028 Transportation Improvement Program

Summary:

The FY 2025-2028 Transportation Improvement Program (TIP) is being administratively modified as follows:

The estimated letting dates for the following two projects have been revised from FY 2025 to FY 2026.

- CSJ: 0922-33-093 - Calton and San Maria Interchange
- CSJ: 0018-05-089 - Replace Bridge at Uniroyal Dr.

The following project has been administratively amended as per sponsor request, to reflect the removal of federal funding and utilizing local funding sources only:

- CJS: 0922-33-236 - SPRINGFIELD extension PH 4

No other changes were made to these projects.

The Administrative modifications are being presented for informational purposes. Changing a letting date or changing of funding sources within the TIP years does not require a formal revision. The Laredo Webb County Area MPO (LWCAMPO) Public Participation Plan (PPP) does not required Policy Committee action for non-substantive revisions to the MPO long-range plans and programs such as the Metropolitan Transportation Plan (MTP) and Transportation Improvement Program (TIP).

The three (3) revisions aforementioned are listed in the attached table.

**Laredo Webb County Area MPO
Transportation Improvement Program (TIP) Projects List
FY2025 - FY2028**

FY 2025								
	CSJ	PROJECT NAME	DESCRIPTION	FROM	TO	PROJECT SPONSOR	CATEGORY	YOE COST
1	0086-16-008	SL 20 Interchange at Lomas Del Sur Blvd.	CONSTRUCTION OF INTERCHANGE IMPROVEMENT AT LOMAS DEL SUR BLVD.	0.580 MILES SOUTH OF LOMAS DEL SUR BLVD.	0.721 MILES NORTH OF LOMAS DEL SUR BLVD.	TxDOT	2, 7	\$41,565,320
2	0922-33-076	FM1472 / Flecha Lane	REALIGNMENT OF FLECHA LN AND LAS CRUCES BLVD.	INTERSECTION OF FM 1472 AND FLECHA LN.	0.174 MILES EAST OF FM 1472	City	10	\$1,800,000
3	0922-33-177	River Vega Trail	CONSTRUCTION OF RIVER VEGA MULTIUSE ALTERNATIVE TRANSPORTATION TRAIL	ANA PARK	LCC CAMPUS	City	9-TAP	\$696,850
4	5000-00-234	NEVI charging station	INSTALL 8 DIRECT CURRENT FAST CHARGE PORTS ALONG THE ELECTRIC ALTERNATIVE FUEL CORRIDORS (IH 35)	619 CROSSROADS AVE, LAREDO, TX		Circle K Stores, Inc.	10NEVI	\$1,304,115
4 PROJECTS FOR FY 2025 IN THE AMOUNT OF:								\$45,366,285
FY 2026								
	CSJ	PROJECT NAME	DESCRIPTION	FROM	TO	PROJECT SPONSOR	CATEGORY	YOE COST
1	0018-05-089	Replace Bridge at Uniroyal Dr.	IH-35 RECONSTRUCTION & INTERCHANGES (RECONSTRUCTED/NEW) @ UNIROYAL DR. & SH 84	0.47 MI S OF UNIROYAL INTERCHANGE	3.22 MI N OF UNIROYAL INTERCHANGE	TxDOT	12, 4	\$254,133,312
2	0922-33-093	Calton and San Maria Interchange	CONSTRUCTION OF A GRADE SEPARATION INTERCHANGE	0.25 MI EAST OF CALTON/SANTA MARIA INTERSECTION	0.25 MI WEST OF CALTON/SANTA MARIA INTERSECTION	City	10	\$16,240,154
3	0018-06-185	Direct Connector #3 and # 6	NEW DIRECT CONNECTOR (#3, #4 AND #6) NORTHBOUND AND SOUTHBOUND IH 35 TO US 59 EASTBOUND	0.50 MI EAST OF IH 35	0.50 MI NORTH OF US 59	TxDOT	12, 11	\$113,505,334
4	0922-33-236	SPRINGFIELD extension PH 4	CONSTRUCTION OF NEW OFF-SYSTEM 2-LANE ROADWAY WITH CONC PAVEMENT, CURB GUTTER, STORM SEWER, SIGNS, MARKINGS & HIKE&BIKE TRAIL.	Hospitality Drive	US 59 NBFR	Webb County City of Laredo Regional Mobility Authority	3LC	\$838,555
4 PROJECTS FOR FY 2026 IN THE AMOUNT OF:								\$384,717,355
FY 2027								
	CSJ	PROJECT NAME	DESCRIPTION	FROM	TO	PROJECT SPONSOR	CATEGORY	YOE COST
1	0922-33-205	Vallecillo Road	CONSTRUCTION OF VALLECILLO ROAD 4-LANE OFF-SYSTEM HWY WITH CONTINUOUS TURN LANE	FM 1472	IH 35	RMA	12*, 7, 3LC	\$37,956,556
1 PROJECT FOR FY 2027								\$37,956,556
FY 2028								
	CSJ	PROJECT NAME	DESCRIPTION	FROM	TO	PROJECT SPONSOR	CATEGORY	YOE COST
1	0086-14-077	US 59 (Loop 20) Interchange at Airport	CONSTRUCTION OF INTERCHANGE AT AIRPORT	0.50 MI SOUTH OF E CORRIDOR RD. (AIRPORT)	0.50 MI NORTH OF E. CORRIDOR RD. (AIRPORT)	TxDOT	2M, 12	\$37,329,691
2	0086-14-086	US 59 (Loop 20) Reconstruction	CONVERTING A 6-LANE NON-FREEWAY FACILITY TO A 6-LANE FREEWAY FACILITY WITH AUXILIARY LANES AND FRONTAGE ROADS	BUSINESS 59	0.28 MILES SOUTH OF JACAMAN RD.	TxDOT	12	\$79,634,871
3	0922-33-213	World Trade Bridge Expansion	PRELIMINARY ENGINEERING AND CONSTRUCTION FOR THE EXPANSION OF THE WORLD TRADE BRIDGE CONSISTING OF 8 LANES BY BUILDING A NEW 8 LANE BRIDGE ADJACENT TO THE EXISTING BRIDGE FOR A TOTAL OF 16 LANES AFTER COMPLETION OF THE PROJECT	WORLD TRADE BRIDGE		City	3, 7	\$12,000,000
3 PROJECTS FOR FY 2028 IN THE AMOUNT OF:								\$128,964,562
TOTAL OF 12 PROJECTS IN THE AMOUNT OF: \$597,004,758								

Administrative Amendments - November 2024

Discussion of old or new business

Adjournment